

SEP 40N

SEP Series – Stamping presses for every application

SCHAAL

by Weil Technology



Visit our
website



02 2022

Technical Data

Press force	400 kN (available from 100 strokes/min)
Stroke rate	stepless up to 500 strokes/min
Distance between table and ram (with clamping plate), largest stroke at the bottom, adjustment at the top	270 mm
Ram adjustment	70 mm
Ram stroke – adjustable	8 – 70 mm
Ram surface (L x W)	340 x 320 mm
Drilled hole in the ram	Ø 40 x 80 mm
Fitting groove in the ram	30 H7 mm
Table surface (L x W)	610 x 690 mm
Mould dimensions (L x W)	570 x 590 mm
Clamping plate thickness	60 mm
Through-hole in the clamping plate (L x W)	460 x 160 mm
Through-hole in the table (L x W)	540/460 x 200 mm
Belt infeed above clamping surface	feed-dependent
Drive power	18,5 kW
Weight (without feed)	5400 kg
Dimensions (L x W x H)	1420 x 1140 x 2400 mm

Technical changes reserved.

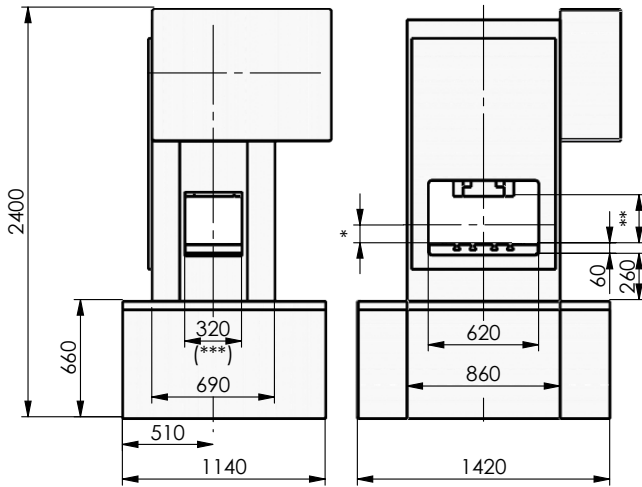
Structure

- Press body in stable double-column mono-block design made of vibration-damping gray cast iron
- Eccentric shaft on roller bearings with adjustment stroke and rotating mass balance
- Air-cooled piston rod, mounted on the eccentric shaft with multi-row, heavy-duty caged roller bearings
- Press ram made of high-strength titanium alloyed cast Al, 6-fold backlash-free rolling bearing supported by linear roller bearings on hardened and ground guideways
- Press drive via frequency-controlled three-phase motor, flywheel and pneumatic clutch-brake combination
- Press sequence control in PLC technology
- Press control with cam controller, mould and press force monitoring
- Special/additional equipment possible at any time by technical arrangement
- The SEP 40N stamping press can be individually equipped with gripper or roller feeds pushing or pulling

SEP 40N

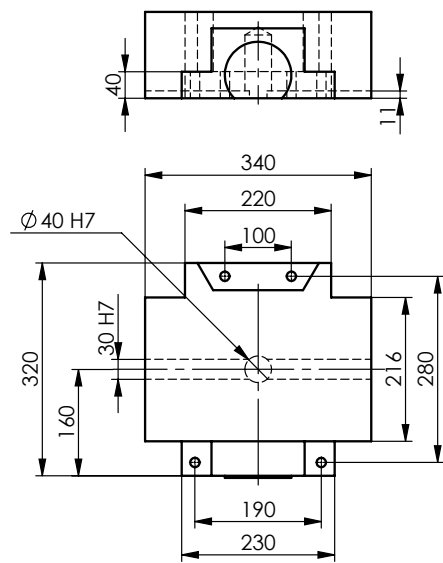
SEP Series – Stamping presses for every application

Dimensions

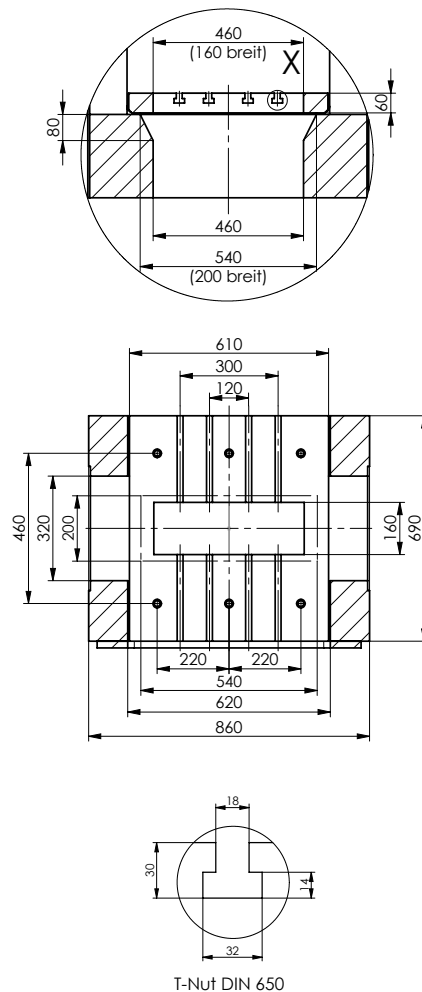


- * Belt infeed height above clamping surface on request (feed-dependent)
- ** Mould installation height (see table)
- *** The lateral passage on the press body is reduced to **260 mm** when a gripper feed is used (special widths on request)

Ram Surface



Mould mounting surface



Ram stroke in mm	Mould installation height min. – max	Permissible stroke rate depending on ram stroke
8	231 – 301	500
10	230 – 300	480
15	228 – 298	470
20	225 – 295	460
25	223 – 293	420
31	220 – 290	380
36	217 – 287	340
41	215 – 285	320
46	212 – 282	300
50	210 – 280	290
54	208 – 278	280
58	206 – 276	270
61	205 – 275	260
64	203 – 273	240
66	202 – 272	220
68	201 – 271	200
69	201 – 271	190
70	200 – 270	180
mechanically adjustable	Installation height in mm for bottom ram stroke (BDC)	with maximum mould upper part weight of 60 kg