

SEP 25N

SEP Series – Stamping presses for every application

SCHAAL
by Weil Technology



Visit our
website



02 2022

Technical Data

Press force	120 kN (available from 150 strokes/min)
Stroke rate	stepless up to 500 strokes/min
Distance between table and ram (with clamping plate), largest stroke at the bottom, adjustment at the top	240 mm
Ram adjustment	60 mm
Ram stroke – adjustable	8 – 60 mm
Ram surface (L x W)	280 x 260 mm
Drilled hole in the ram	Ø 40 x 80 mm
Fitting groove in the ram	30 H7 mm
Table surface (L x W)	490 x 560 mm
Mould dimensions (L x W)	450 x 460 mm
Clamping plate thickness	50 mm
Through-hole in the clamping plate (L x W)	330 x 120 mm
Through-hole in the table (L x W)	420/340 mm x 160 mm
Belt infeed above clamping surface	feed-dependent
Drive power	11 kW
Weight (without feed)	3400 kg
Dimensions (L x W x H)	1180 x 950 x 2200 mm

Technical changes reserved.

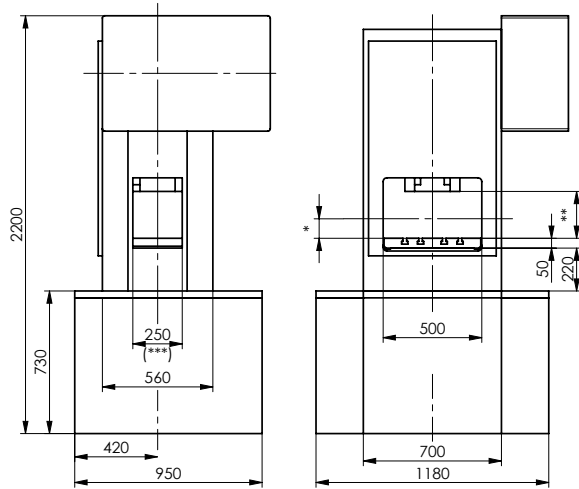
Structure

- Press body in stable double-column mono-block design made of vibration-damping gray cast iron
- Eccentric shaft on roller bearings with adjustment stroke and rotating mass balance
- Air-cooled piston rod, mounted on the eccentric shaft with multi-row, heavy-duty caged roller bearings
- Press ram made of high-strength titanium alloyed cast Al, 6-fold backlash-free rolling bearing supported by linear roller bearings on hardened and ground guideways
- Press drive via frequency-controlled three-phase motor, flywheel and pneumatic clutch-brake combination
- Press sequence control in PLC technology
- Press control with cam controller, mould and press force monitoring
- Special/additional equipment possible at any time by technical arrangement
- The SEP 25N stamping press can be individually equipped with gripper or roller feeds pushing or pulling
- In the high-speed version, speeds of up to 800 strokes/min are also possible

SEP 25N

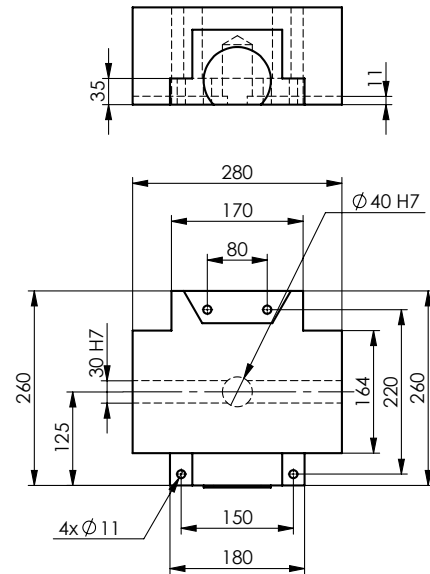
SEP Series – Stamping presses for every application

Dimensions

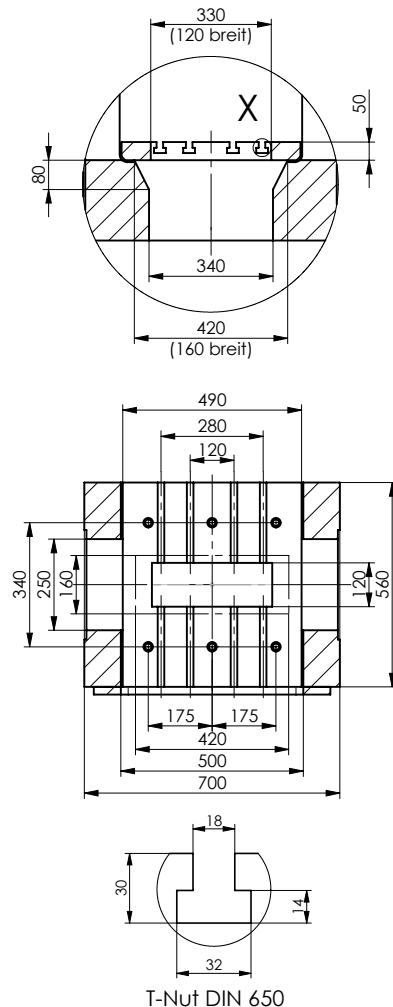


- * Belt infeed height above clamping surface on request (feed-dependent)
- ** Mould installation height (see table)
- *** The lateral passage on the press body is reduced to **180 mm** when a gripper feed is used (special widths on request)

Ram Surface



Mould mounting surface



Ram stroke in mm	Mould installation height min. – max	Permissible stroke rate depending on ram stroke
8	206 – 266	500
10	205 – 265	490
13	204 – 264	480
17	202 – 262	470
22	199 – 259	460
27	198 – 258	420
32	194 – 254	380
36	192 – 252	360
40	190 – 250	340
44	188 – 248	330
47	187 – 247	320
50	185 – 245	300
53	184 – 244	290
55	183 – 243	280
56	182 – 242	270
58	181 – 241	260
59	181 – 241	240
60	180 – 240	220
mechanically adjustable	Installation height in mm for bottom ram stroke (BDC)	with maximum mould upper part weight of 50 kg